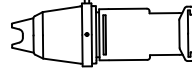


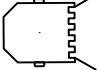
WBH
Willy-Brandt-Halle

**heim
am
main**

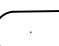
Legende Großer Saal



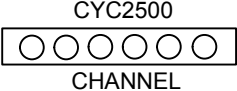
Profilier ETC 575W



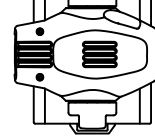
Stufenlinse Desisti 1 KW



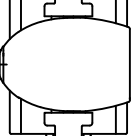
LED-Par RGB



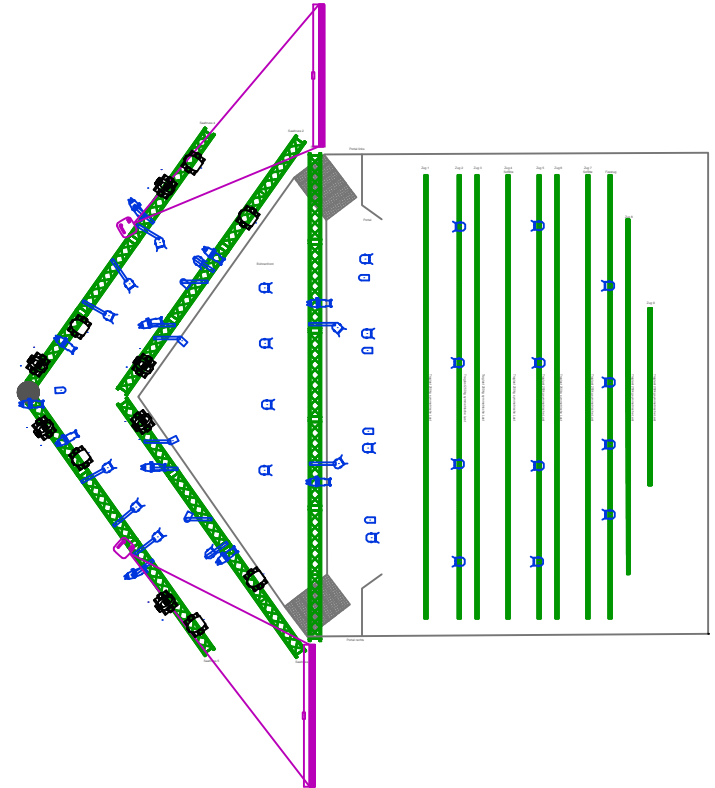
CYC2500
CHANNEL



Martin Mac 500



Martin Mac 600



Saalplan WBH Mülheim	
Planname	Großer Saal_Gesamt
Erstellt von:	Lichtstärken-Veranstaltungstechnik Jana Radomski
Erstellt am:	10.01.2022
Alle Maße sind vor Ort zu Prüfen	